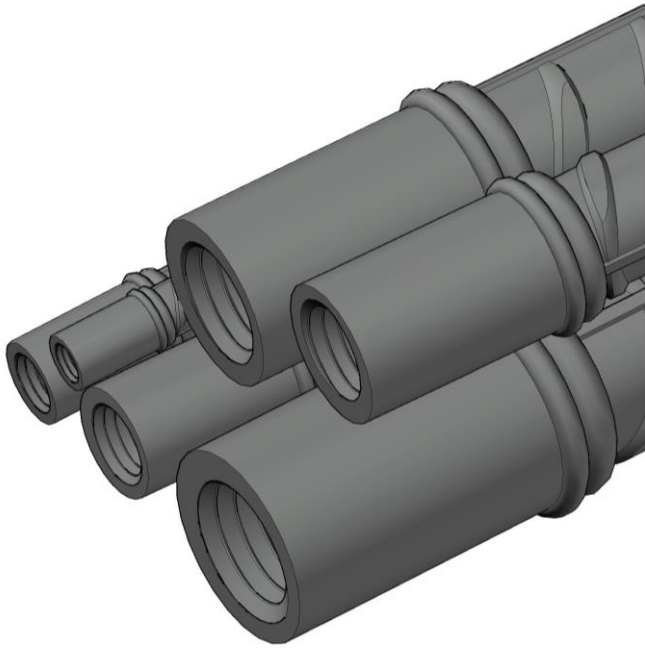


McCalls



FT Uni Frictional Press Rebar Couplers

Commitment to Quality & Performance

McCalls Splicing Limited (A member of McCalls Special Products Ltd.)

Rm 1501, Yuen Long Trading Center, 33 Wang Yip Street West, Yuen Long, N.T., Hong Kong

Tel: +852 2488 7530

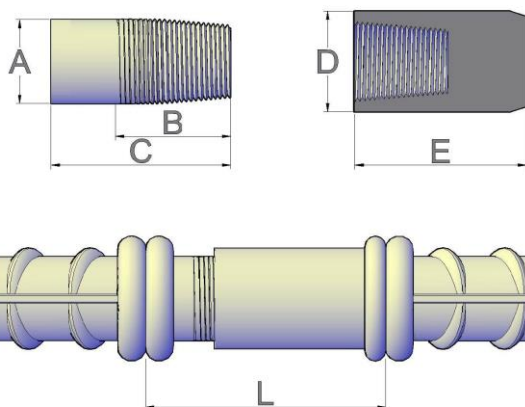
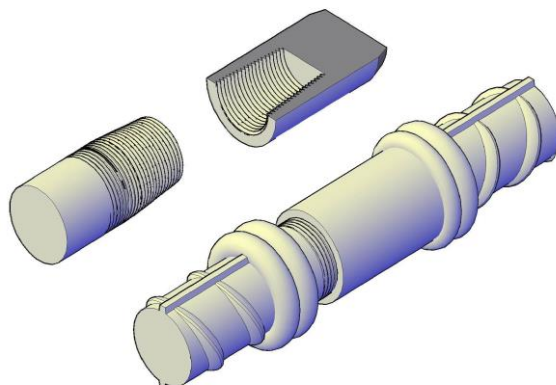
Fax: + 852 2443 5671

Email: chauvinlok@hotmail.com / chauvinlok@mccallssplicing.com Website: mccallssplicing.com



Type WK.S (Standard)

Connecting two rebars and at least one rebar can be rotated.



Rebar Diameter (mm)	Coupler Dimension (mm)					
	A	B	C	D	E	L
12	14	13	38	19	29	42 ± 3
16	18	15.5	41	25	32	50 ± 3
20	19	20	43	25	40	60 ± 3
25	25	25	55	34	50	70 ± 3
32	32	32	63	42	63	80 ± 4
40	40	40	75	53	70	100 ± 5
50	50	50	85	65	85	110 ± 6

McCalls Splicing Limited (A member of McCalls Special Products Ltd.)

Rm 1501, Yuen Long Trading Center, 33 Wang Yip Street West, Yuen Long, N.T., Hong Kong

Tel: +852 2488 7530

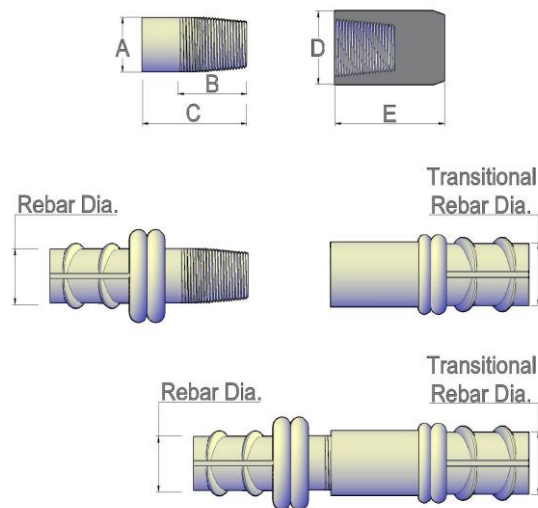
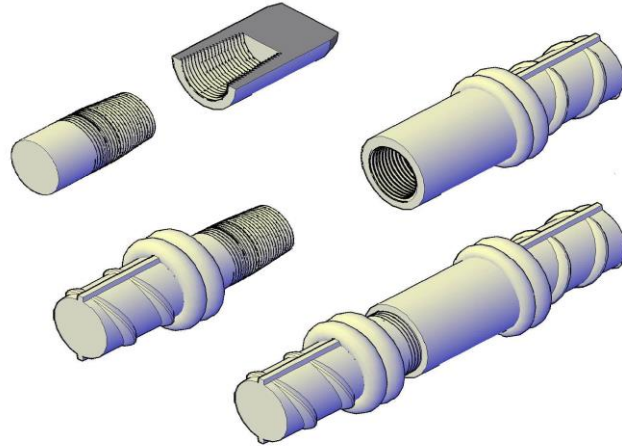
Fax: + 852 2443 5671

Email: chauvinlok@hotmail.com / chauvinlok@mccallssplicing.com Website: mccallssplicing.com



Type WK.TS (Transitional Standard Coupler)

Connecting two rebars of different diameter and at least one rebar can be rotated.



Transitional Rebar Diameter (mm)	Rebar Diameter (mm)	Coupler Dimension (mm)				
		A	B	C	D	E
16	12	14	13	38	19	29
20	16	18	15.5	41	25	32
25	20	19	20	43	25	40
32	25	25	25	55	34	50
40	32	32	32	63	42	63
50	40	46	40	75	53	70

Note: Different combination of transitional rebar diameters can be supplied upon request.

McCalls Splicing Limited (A member of McCalls Special Products Ltd.)

Rm 1501, Yuen Long Trading Center, 33 Wang Yip Street West, Yuen Long, N.T., Hong Kong

Tel: +852 2488 7530

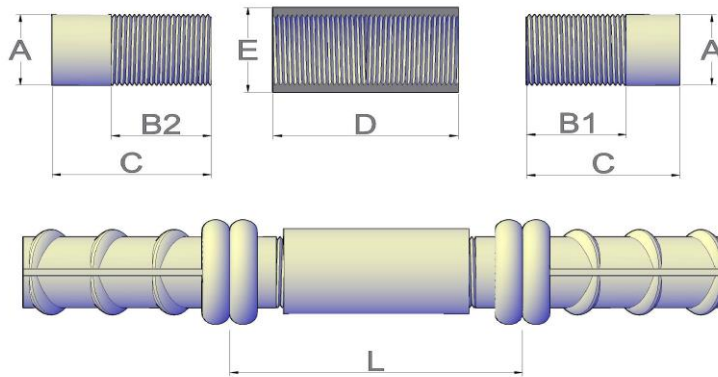
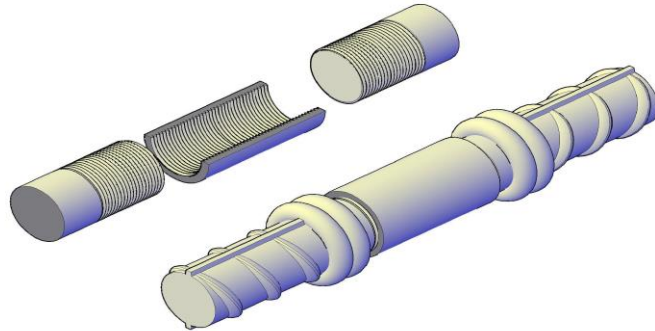
Fax: + 852 2443 5671

Email: chauvinlok@hotmail.com / chauvinlok@mccallssplicing.com Website: mccallssplicing.com



Type WK.P (Positional Coupler)

Both rebars cannot be rotated and at least one rebar can be moved



Rebar Diameter (mm)	Coupler Dimension (mm)						
	A	B1	B2	C	D	E	L
16	18	14	17	41	30	25	70 ± 2
20	22	19	22	45	39	28	78 ± 2
25	28	25	28	55	51	36	94 ± 3
32	36	30	33	65	60	46	110 ± 3
40	42	37	40	75	73	55	126 ± 4
50	50	49	53	93	98	70	150 ± 4

McCalls Splicing Limited (A member of McCalls Special Products Ltd.)

Rm 1501, Yuen Long Trading Center, 33 Wang Yip Street West, Yuen Long, N.T., Hong Kong

Tel: +852 2488 7530

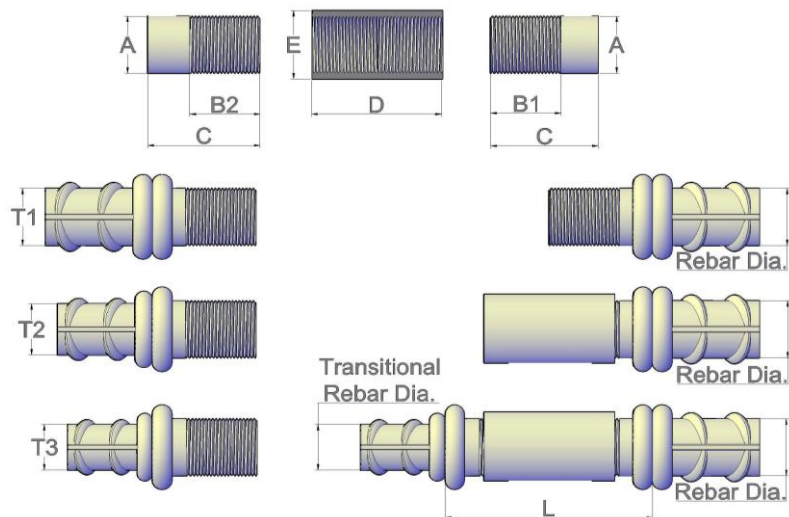
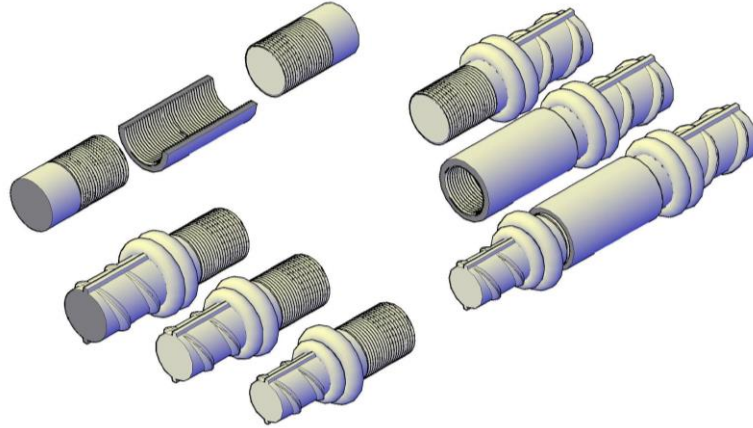
Fax: + 852 2443 5671

Email: chauvinlok@hotmail.com / chauvinlok@mccallssplicing.com Website: mccallssplicing.com



Type WK.TP (Transitional Positional-Coupler)

Connecting two 2 rebars of different diameters and both rebars cannot be rotated, but at least one rebar can be moved.



Rebar Diameter (mm)	Transitional			Coupler Dimension (mm)						
	T1	T2	T3	A	B1	B2	C	D	E	L
16	12	-	-	18	14	17	41	33	25	75 ± 3
20	16	12	-	22	19	22	45	39	28	80 ± 3
25	20	16	12	28	25	28	55	51	36	90 ± 4
32	25	20	16	36	30	33	65	60	46	120 ± 4
40	32	25	20	42	37	40	75	73	55	135 ± 5
50	40	32	25	50	49	53	93	98	70	155 ± 5

McCalls Splicing Limited (A member of McCalls Special Products Ltd.)

Rm 1501, Yuen Long Trading Center, 33 Wang Yip Street West, Yuen Long, N.T., Hong Kong

Tel: +852 2488 7530

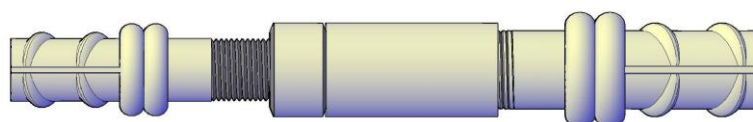
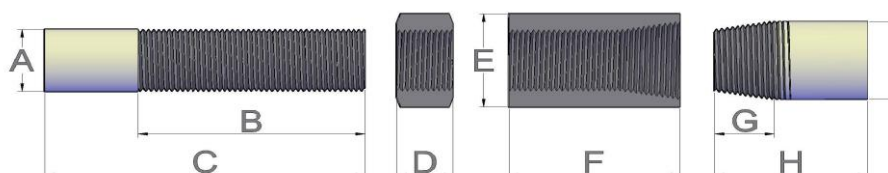
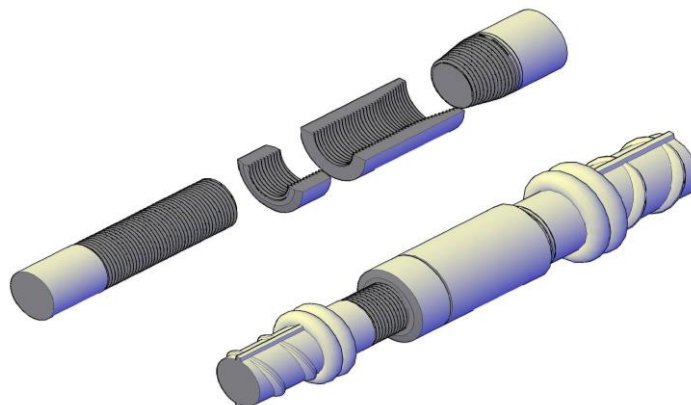
Fax: + 852 2443 5671

Email: chauvinlok@hotmail.com / chauvinlok@mccallssplicing.com Website: mccallssplicing.com



Type WK.LP (Long Positional-Coupler)

Both rebars cannot be rotated and at least one rebar is movable and length adjustment of the coupler is required.



Rebar Diameter (mm)	Coupler Dimension (mm)								
	A	B	C	D	E	F	G	H	I
16	18	43	68	15	25	42	14	39	19
20	19	45	70	15	30	46	16	41	24
25	25	52	80	15	38	57	20	50	30
32	32	56	85	15	48	66	25	58	38
40	46	63	98	15	55	78	30	64	46
50	50	75	115	15	75	96	36	71	60

McCalls Splicing Limited (A member of McCalls Special Products Ltd.)

Rm 1501, Yuen Long Trading Center, 33 Wang Yip Street West, Yuen Long, N.T., Hong Kong

Tel: +852 2488 7530

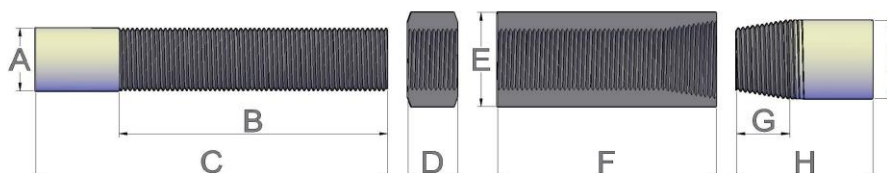
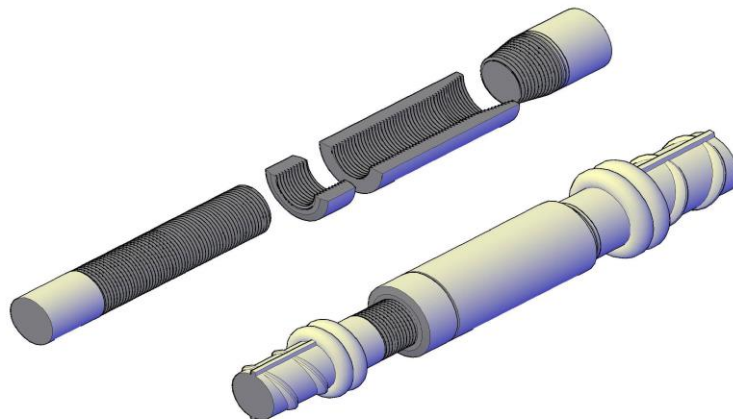
Fax: + 852 2443 5671

Email: chauvinlok@hotmail.com / chauvinlok@mccallssplicing.com Website: mccallssplicing.com



Type WK.ELP (Extended Long Positional-Coupler)

Both rebars cannot be rotated and at least one bar is movable and extended length adjustment of the coupler is required.



Rebar Diameter (mm)	Coupler Dimension (mm)								
	A	B	C	D	E	F	G	H	I
16	18	63	88	15	25	62	14	39	19
20	19	65	90	15	30	66	16	41	24
25	24	82	110	15	38	87	20	50	30
32	32	86	116	15	48	96	25	58	38
40	46	93	128	15	55	108	30	64	46
50	50	115	155	15	75	136	36	71	60

McCalls Splicing Limited (A member of McCalls Special Products Ltd.)

Rm 1501, Yuen Long Trading Center, 33 Wang Yip Street West, Yuen Long, N.T., Hong Kong

Tel: +852 2488 7530

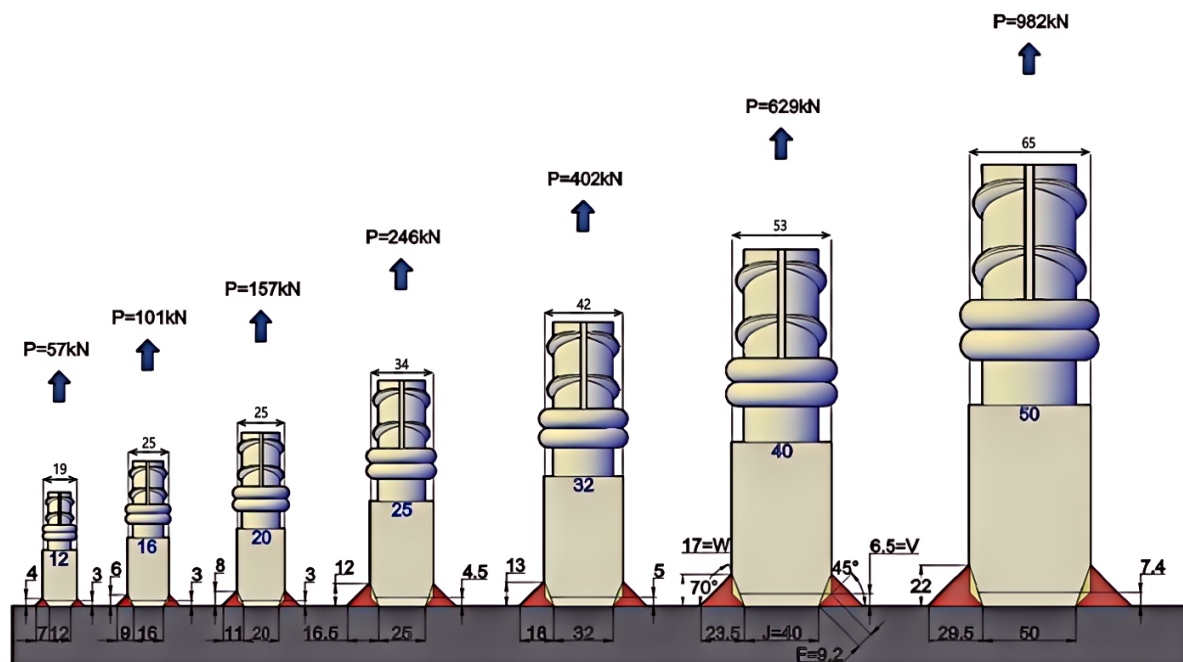
Fax: + 852 2443 5671

Email: chauvinlok@hotmail.com / chauvinlok@mccallssplicing.com Website: mccallssplicing.com



Type WK.S (Weldable Coupler for Steel Structure Connection)

WK.S Female Weldable coupler with internal thread on one end and prepare for welding at the other one



Rebar Diameter (mm)	Rebar		Force P (kN)	Force Coupler Dimension (mm) (45°-70°)				Weld (mm) W	Plate	
	A (mm ²)	fy (MPa)		D	J	F	V		Grade	Size
12	113	500	57	18	12	4.2	3	4	S235	100x100x30
16	201	500	101	22	16	4.2	3	6	S235	100x100x30
20	314	500	157	25	20	4.2	3	8	S235	100x100x30
25	419	500	246	34	25	6.3-12.7	4.4-11.5	12	S235	100x100x30
32	804	500	402	42	32	7.0-14.1	5.0-12.5	13	S235	100x100x30
40	1257	500	629	53	40	9.2-18.4	6.5-16.5	17	S235	100x100x30
50	1963	500	982	65	50	10.6-21.2	7.5-21	22	S235	100x100x30

McCalls Splicing Limited (A member of McCalls Special Products Ltd.)

Rm 1501, Yuen Long Trading Center, 33 Wang Yip Street West, Yuen Long, N.T., Hong Kong

Tel: +852 2488 7530

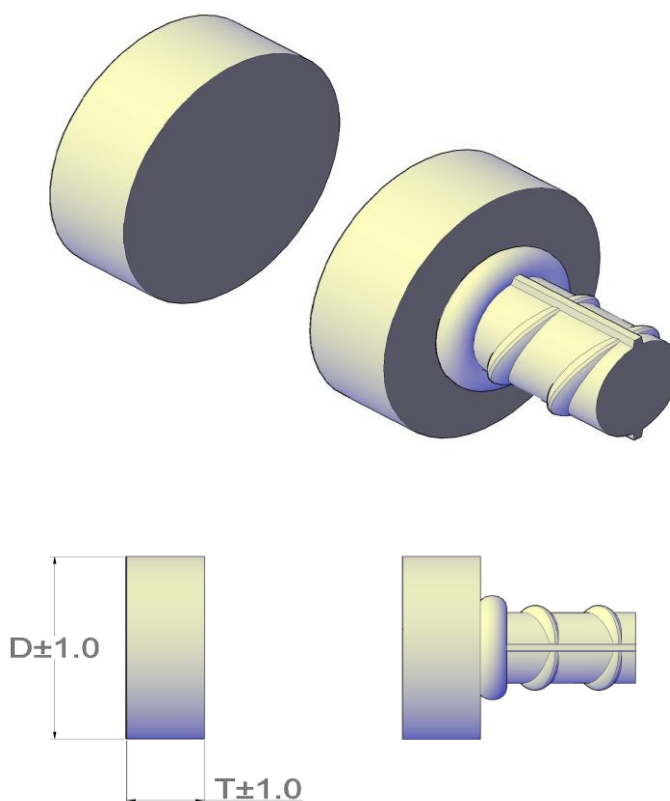
Fax: + 852 2443 5671

Email: chauvinlok@hotmail.com / chauvinlok@mccallssplicing.com Website: mccallssplicing.com



Type WK.TH (T Head)

An oversized end anchor secured at rebar ends for reduction of rebar congestion by conventional hooked rebar. From chapter 4.5.3, ACI 352R-02, headed bars should meet ASTM Specification A 970. From chapter 4.5.3.3 For Type 1 and Type 2 connections, the development length L_{dt} (development length for a headed bar, measured from the critical section to the outside end of the head) of a headed bar should be taken as 3/4 of the value computed for hooked bars. WK.TH is also designed to ISO 15698-1 (Steel of Reinforcement of Concrete Headed Bars Requirement).



Rebar Diameter (mm)	Thickness (mm)	Diameter (mm)
16	14	40
20	16	50
25	22	65
32	24	80
40	30	100
50	35	125

McCalls Splicing Limited (A member of McCalls Special Products Ltd.)

Rm 1501, Yuen Long Trading Center, 33 Wang Yip Street West, Yuen Long, N.T., Hong Kong

Tel: +852 2488 7530

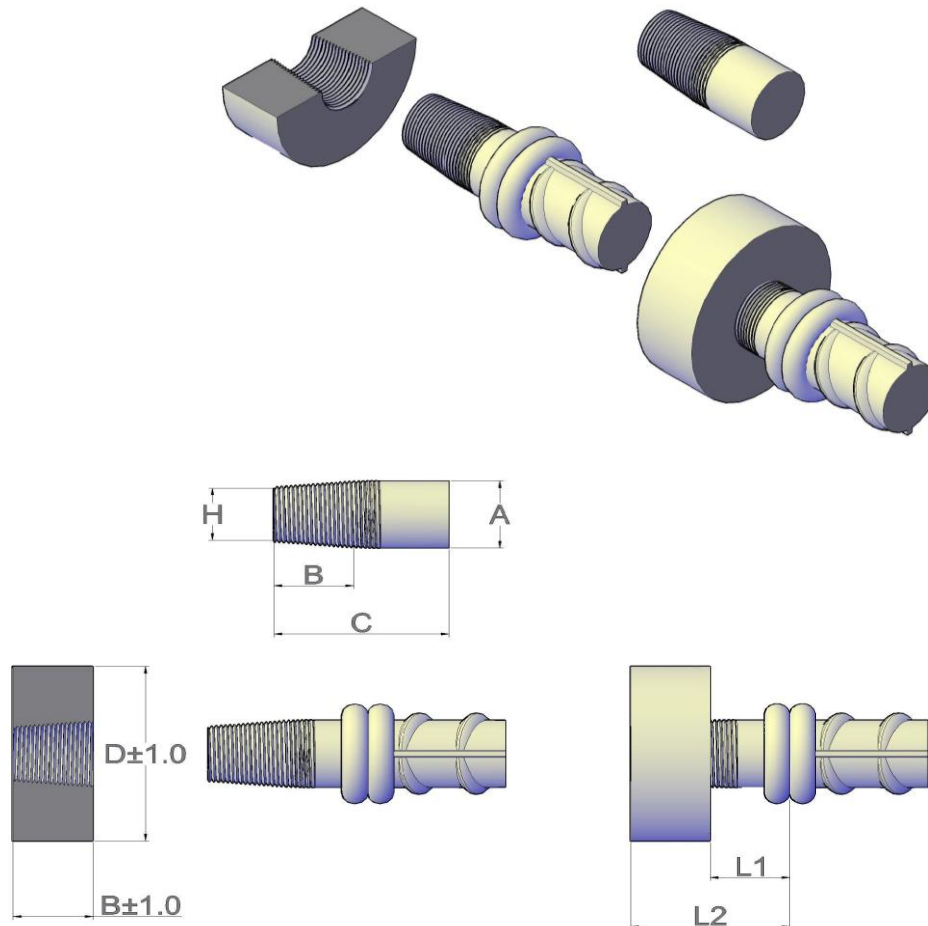
Fax: + 852 2443 5671

Email: chauvinlok@hotmail.com / chauvinlok@mccallssplicing.com Website: mccallssplicing.com



Type WK.MH (Mechanical Head)

Two piece end anchor with one male thread and one female threaded anchor. WK.MH meets ASTM Specification A 970 and ISO 15698-1



Rebar Diameter (mm)	Assembly Dimension		A	B	C	D	H
	L1	L2					
16	22	37.5	16	15.5	41	40	13
20	22	42	19	20	45	50	16
25	25	50	25	25	55	65	21
32	32	57	32	32	63	80	26
40	40	60	40	40	75	100	33
50	50	73	50	50	85	125	41

McCalls Splicing Limited (A member of McCalls Special Products Ltd.)

Rm 1501, Yuen Long Trading Center, 33 Wang Yip Street West, Yuen Long, N.T., Hong Kong

Tel: +852 2488 7530

Fax: + 852 2443 5671

Email: chauvinlok@hotmail.com / chauvinlok@mccallssplicing.com Website: mccallssplicing.com

